



OCI and NorthH2 are joining forces to develop the first large-scale green ammonia and methanol value chains in the Netherlands and Europe. A sustainable economy based in a large part on green hydrogen comes one step closer:

1GW ≈ 900KT

CO₂ reduction per year
Equivalent to:

4%

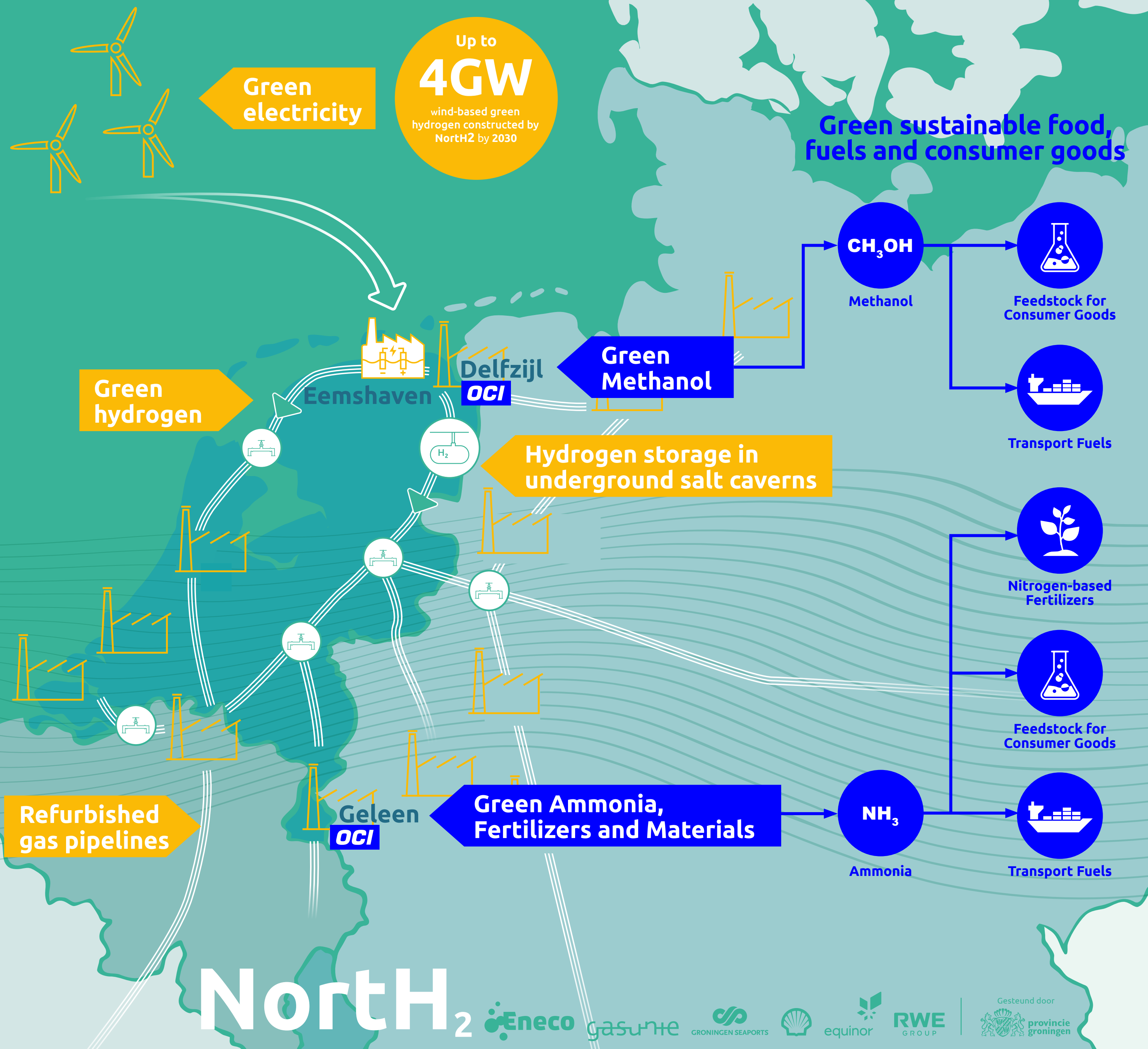
2030 Dutch Climate Targets set for Industry

450K

Cars taken off the road per year

250K

Households' energy use per year



Footnotes:
 1. 900KT calculated as the average reduction of CO₂ at OCI's plants if 1GW were used to replace natural gas as a feedstock
 2. 450K cars calculated based on average of 2-2.5 tons CO₂ per passenger vehicle per year
 3. 250K households' energy use calculated based on 3.7 tons CO₂ per household per year
 4. Orange elements represent NorthH2; blue elements represent OCI
 5. All figures are illustrative based on Dutch averages and may differ if other